

ICF – An international challenge

Presentation by

Bertil Thorslund

Swedish Social Insurance Agency

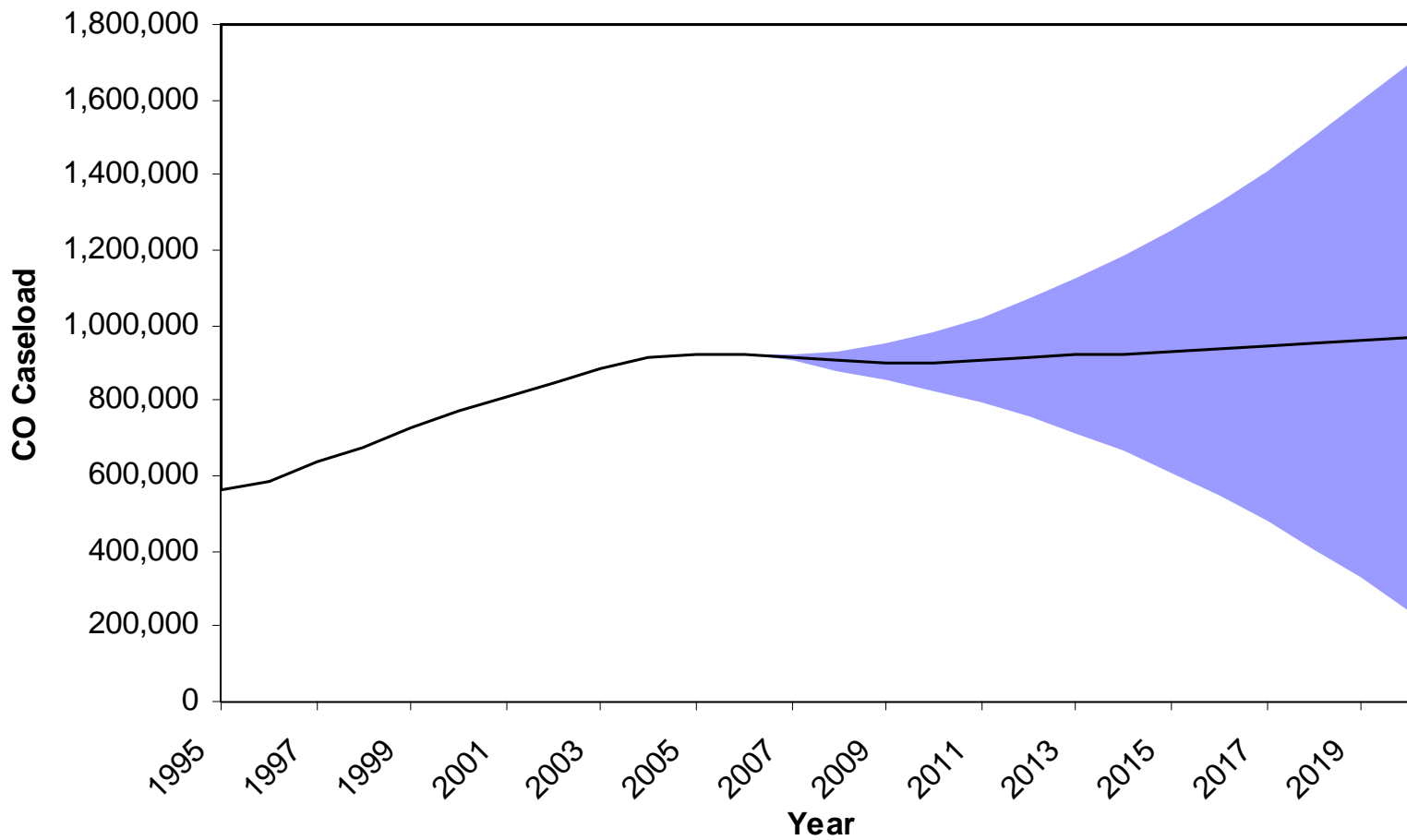
bertil.thorslund@socialagency.se

WG1: Model Development Procedures

WG2: Software and Data Management

WG3: Labour Market and Benefit Take-up

WG4: Uncertainty Analysis



atp=

Accepting uncertainty

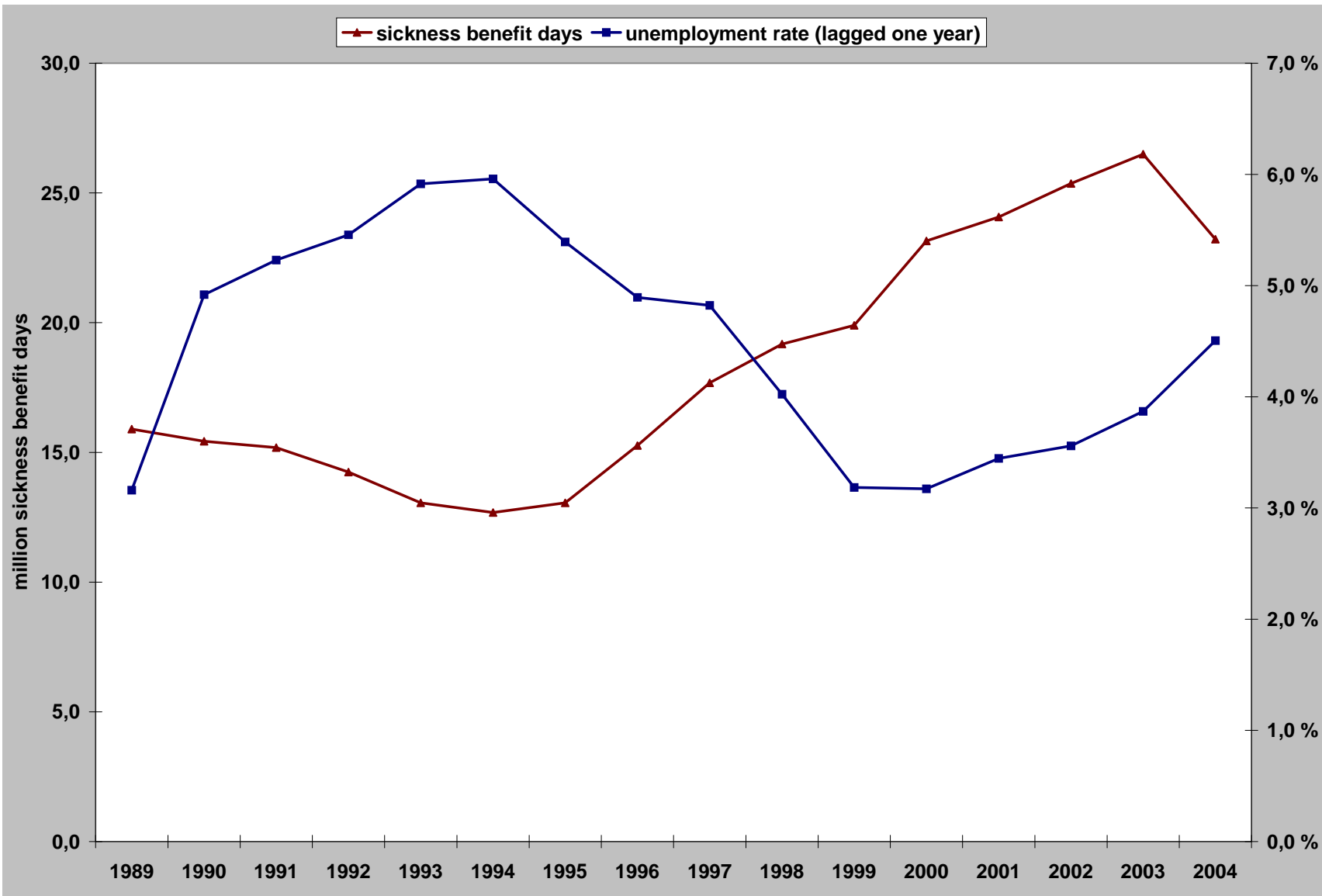


ICF workshop
23 November 2006

Søren Fiig Jarner
Chief Analyst, Ph.D.

It's all about confidence!

- Hard to convince people of something they don't expect
 - and it is impossible if they don't trust you
- Possible to explain virtually everything given time and interest
 - educate board over time ... and build up confidence
- Acting in the public arena is different
 - very hard to maintain the wider perspective
 - demand for simple explanations and one-liners
 - very little accept of inherent uncertainty in forecasts
 - ... still confidence goes a long way!



We are looking for a tool that will identify the differences between one version of code and the next

and also to securely hold the code

and allow individual team members to 'check out' the code that they need to change, preventing other team members from modifying the same code at the same time.

Sally Edwards of DWP.

No Government can resist the temptation to make its mark by making significant changes in legislation.

For this reason most models can be expected to have only a limited 'life expectancy'.

A highly sophisticated and complex model that can only cater for the existing legislation is likely to become obsolete very rapidly.

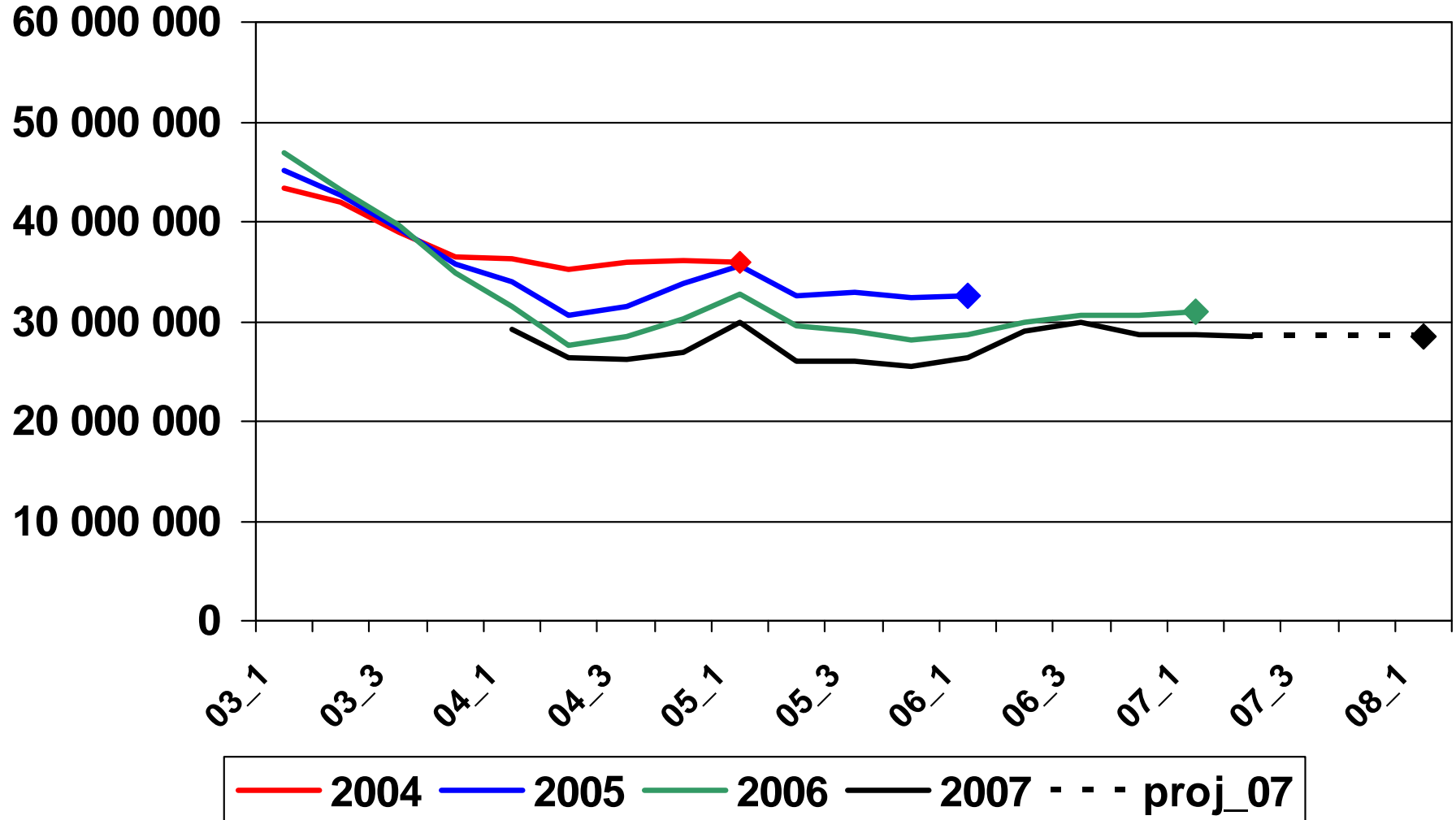
Sarah Hawken
formerly GAD, presently DWP

Also when considering such large item of government expenditure as pensions, having two models which use different techniques, but produce similar results can be of assistance when explaining results to clients.

Sarah Hawken
formerly GAD, presently DWP

A useful utility

Sickness cash benefit Sweden



Thank you for your attention

and

welcome to join ICF,

an international collaboration aimed at

Improving Confidence in Forecasting