



International Actuarial Association Health Section  
2007 Colloquium

13th - 16th May 2007 Cape Town, South Africa

# Income Protection Trends by Cause of Disability in the United Kingdom

Sue Elliott, FSA, FCIA, FIA  
Watson Wyatt Limited  
[sue.elliott@watsonwyatt.com](mailto:sue.elliott@watsonwyatt.com)

IAAHS 2007  
IAA Health Section Colloquium  
13<sup>th</sup> – 16<sup>th</sup> May 2007  
CTICC  
[www.iaahs2007.com](http://www.iaahs2007.com)

# Contents

---

- **Background**
- **Data**
- **Methodology**
- **Results**
- **Questions and feedback**

# Background

---

- **IP Cause of Disability working party formed in October 2004**
- **Current members:**
  - **Graham Clark (Chair), Rajeev Shah (Sec), Bill Baker, David Leach, Jamie Marshall, Gerry Kennedy, David Wilkie**
- **Terms of reference:**
  - **Stage 1 - Publish an initial analysis of inceptions / recoveries data in a manner that would be useful or interesting to practitioners**
  - **Stage 2 - Conduct, later, a statistically robust analysis of the data and publish the key results**
- **Progress – Stage 1 working paper 2006 Q2**

# Background

---

- **Why analyse by cause?**
  - **Insight into past trends**
  - **Projecting future trends?**
  - **Reserving more reliably for claims in payment**
  - **Underwriting**
  - **Claims control**
  - **Product design**
- **Therefore focus on terminations**

# Background

---

- **CMIR8 (1986)**
  - 1975-1978 data, 14 sickness groups
  - Inceptions and terminations
- **Health & Care Conference 2001**
  - Wilkie analysis of inceptions by cause, no grouping
- **Health & Care Conference 2005**
  - CMI IP cause of disability working party update

# Data

---

- **Complexity**
  - 12 years (1991 – 2002) - see Note below
  - 72 causes plus cause unknown
  - 5 deferred periods (1, 4, 13, 26 & 52 weeks)
  - 4 occupational classes plus class unknown
  - 2 sexes
  - Age or age group
  - Duration of claim (for terminations)
- **Grouping required**

**Note: data available from 1975, but not on the preferred Standard\* data set**

# Data

---

- **Grouping of causes**
  - “Medically similar” (broadly)
  - “Statistically similar” (generally)
  - Pragmatic approach
- **Resulting groups**
  1. Infections & acute respiratory
  2. Neoplasms
  3. Mental illness
  4. Nervous system & sensory organs
  5. Circulatory
  6. Digestive (non-infectious)
  7. Genito-urinary
  8. Arthritis
  9. Musculoskeletal
  10. Injuries
  11. All other known causes
  12. Unknown

# Data – inceptions

---

<b>Cause Group</b>	<b>No. Claim Inceptions</b>	<b>% of Total</b>
Musculoskeletal	4,765	17%
Mental illness	4,488	16%
Injuries	4,168	15%
Circulatory	3,928	14%
Neoplasms	2,212	8%
Arthritis	1,473	5%
Nervous system & sensory organs	1,377	5%
Digestive (non-infectious)	1,320	5%
Infections & acute respiratory	719	3%
Genito-urinary	392	1%
All others	2,150	8%
Unknown	837	3%
<b>Total</b>	<b>27,829</b>	<b>100%</b>

# Data – terminations

---

<b>Cause Group</b>	<b>No. Recoveries</b>	<b>% of Total</b>	<b>No. Deaths</b>	<b>% of Total</b>
Musculoskeletal	2,759	21%	42	3%
Mental illness	1,477	11%	94	6%
Injuries	3,052	23%	32	2%
Circulatory	1,500	11%	203	13%
Neoplasms	599	5%	796	51%
Arthritis	444	3%	32	2%
Nervous system & sensory organs	384	3%	83	5%
Digestive (non-infectious)	967	7%	37	2%
Infections & acute respiratory	457	3%	27	2%
Genito-urinary	234	2%	22	1%
All others	964	7%	88	6%
Unknown	467	4%	93	6%
<b>Total</b>	<b>13,304</b>	<b>100%</b>	<b>1,549</b>	<b>100%</b>

# Methodology

---

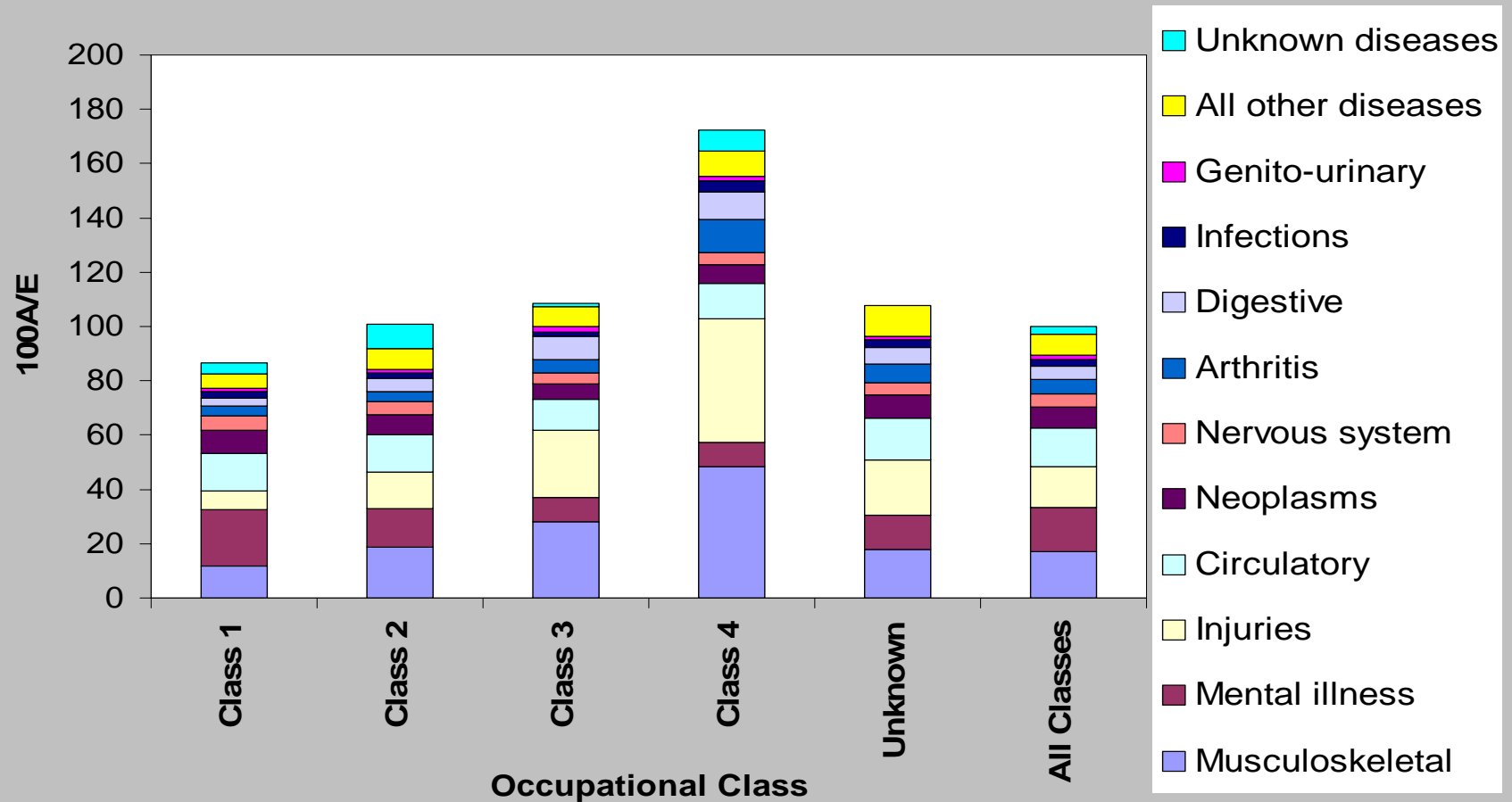
- **Cut data in different ways**
- **Group data for factors not being considered (beware of pitfalls)**
- **Not GLM!**

# Results

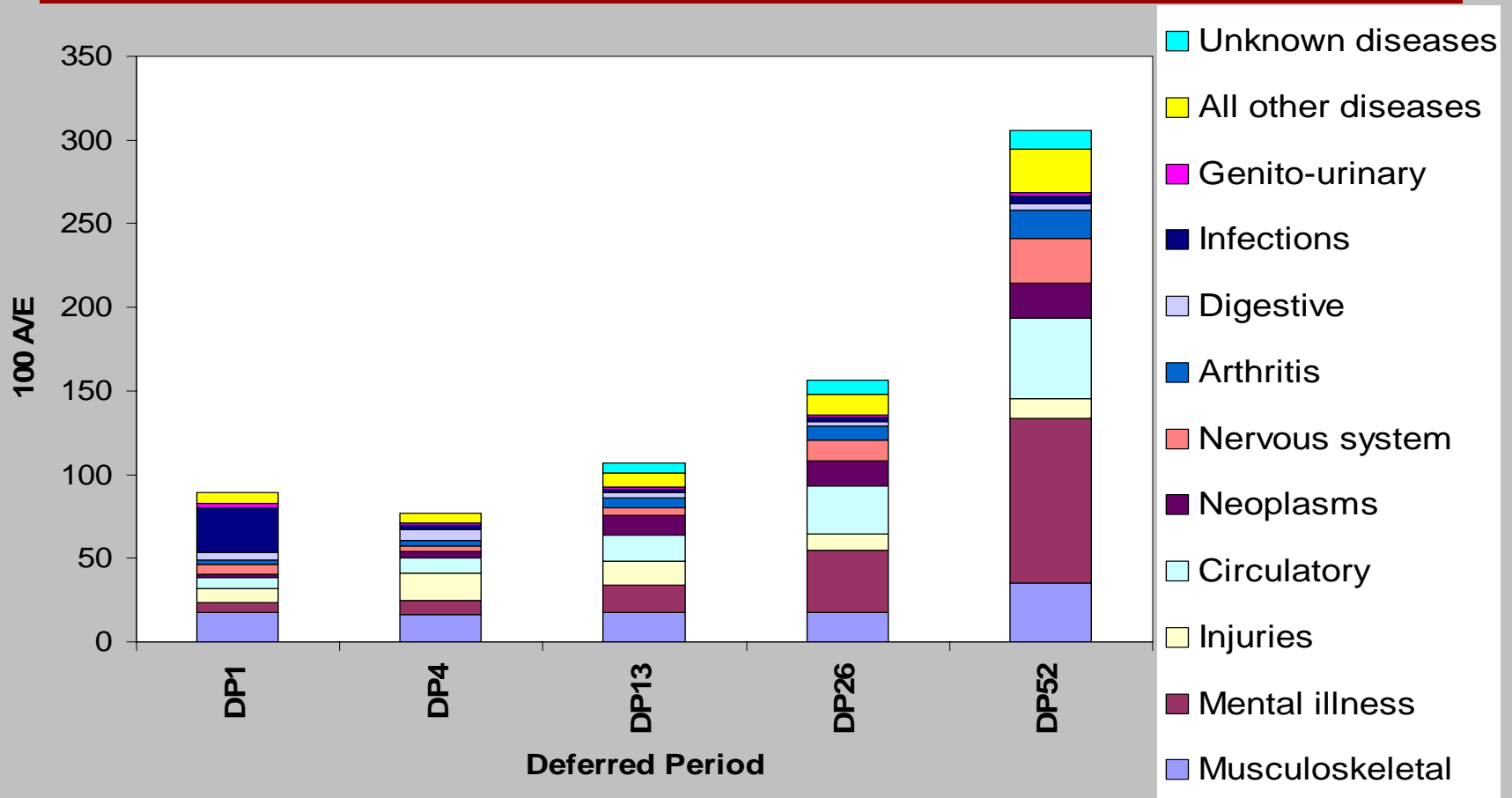
---

- **Results shown as 100 A/E with E in accordance with CMIR15 i.e. based on CMIR12:**
  - 1975-78 individual, male data
  - Standard dataset, with rating = 0
  - No special benefit types
  - No identifiable underwriting exclusions
- **E varies by age and deferred period (and duration sick for terminations)**
- **Inception factor = sickness inception intensity x probability of remaining sick throughout deferred period and deciding to claim**
- **D52 sickness inception intensity = 0.68926 x D26 sickness inception intensity**

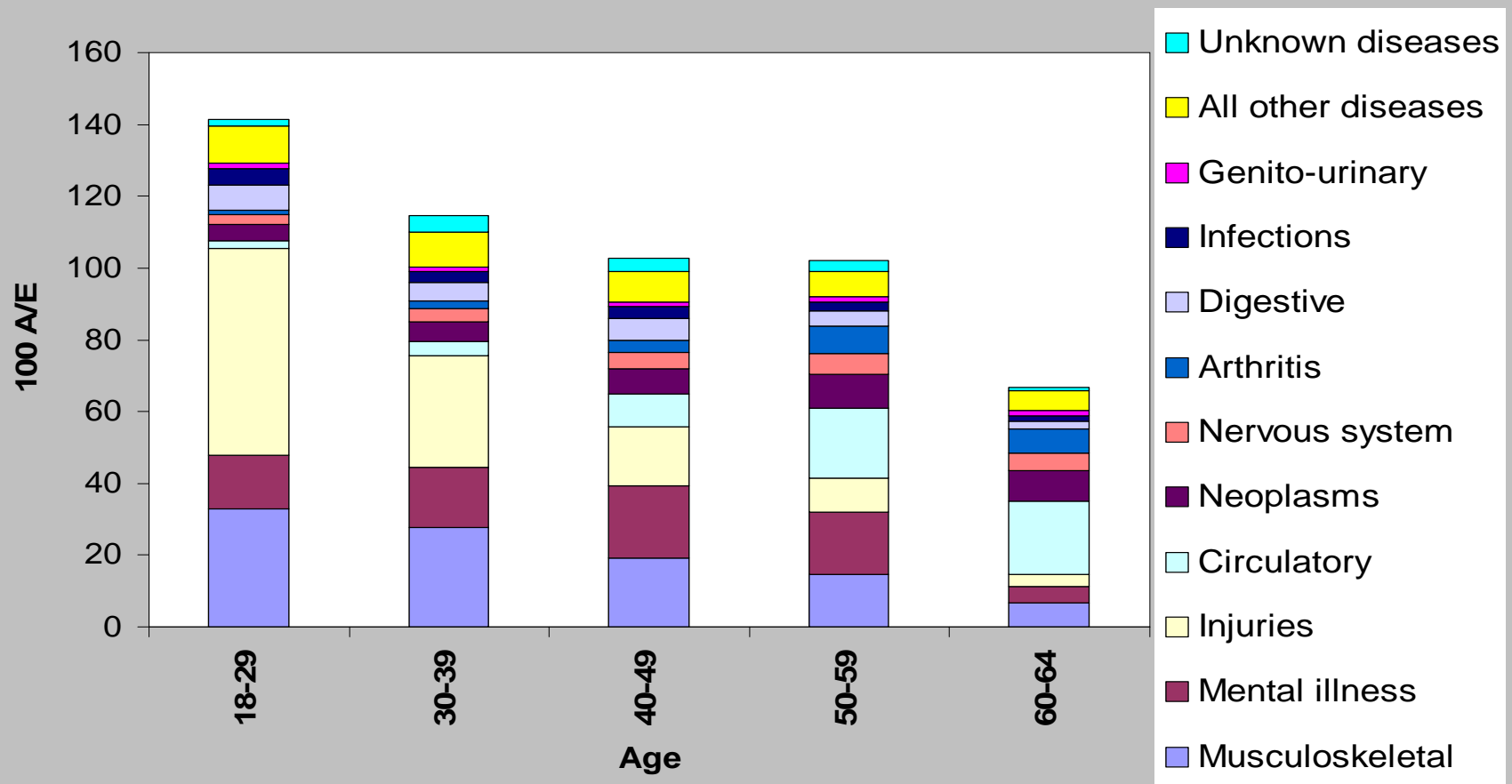
# Results – inceptions (males)



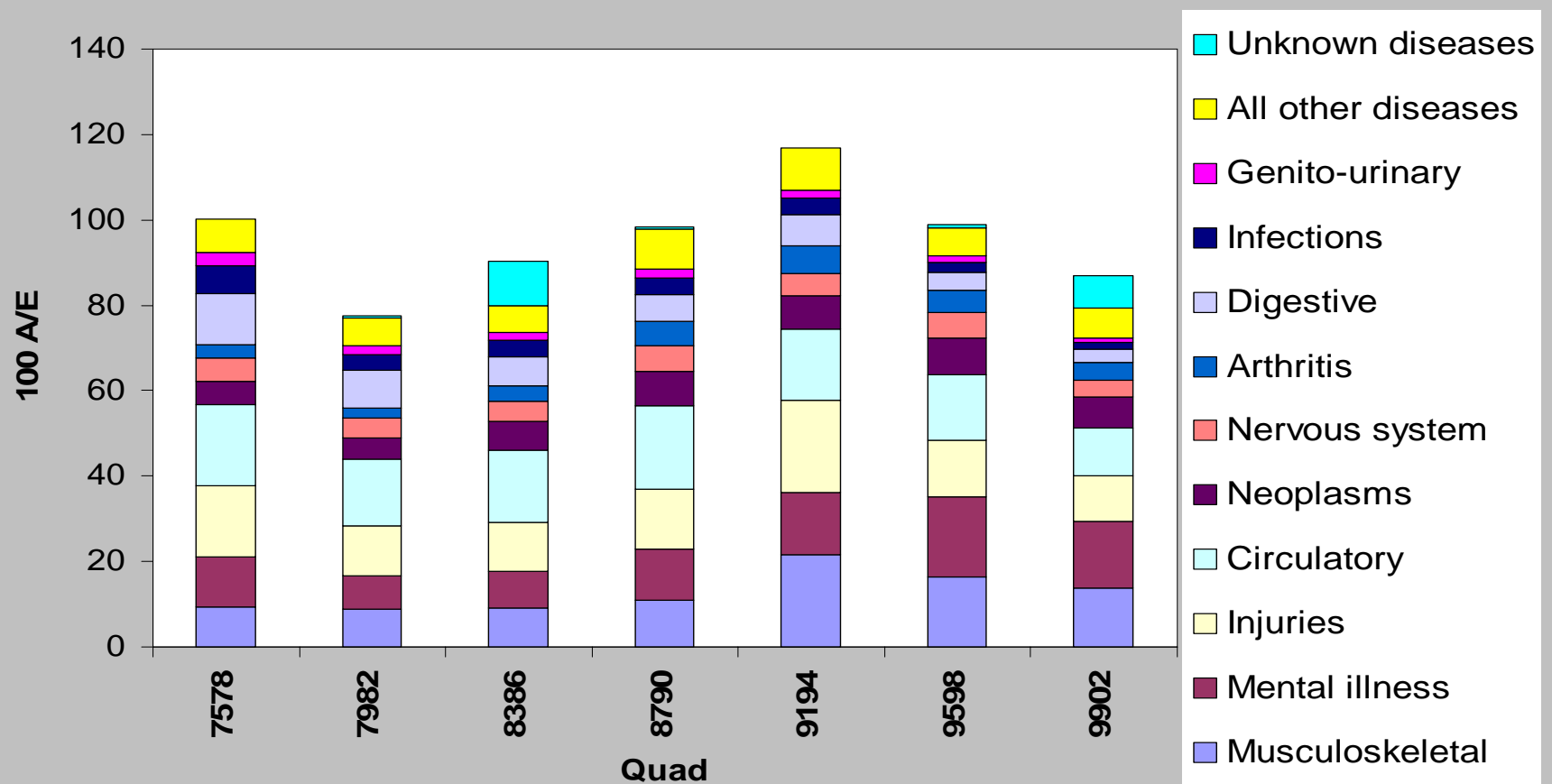
# Results – inceptions (males)



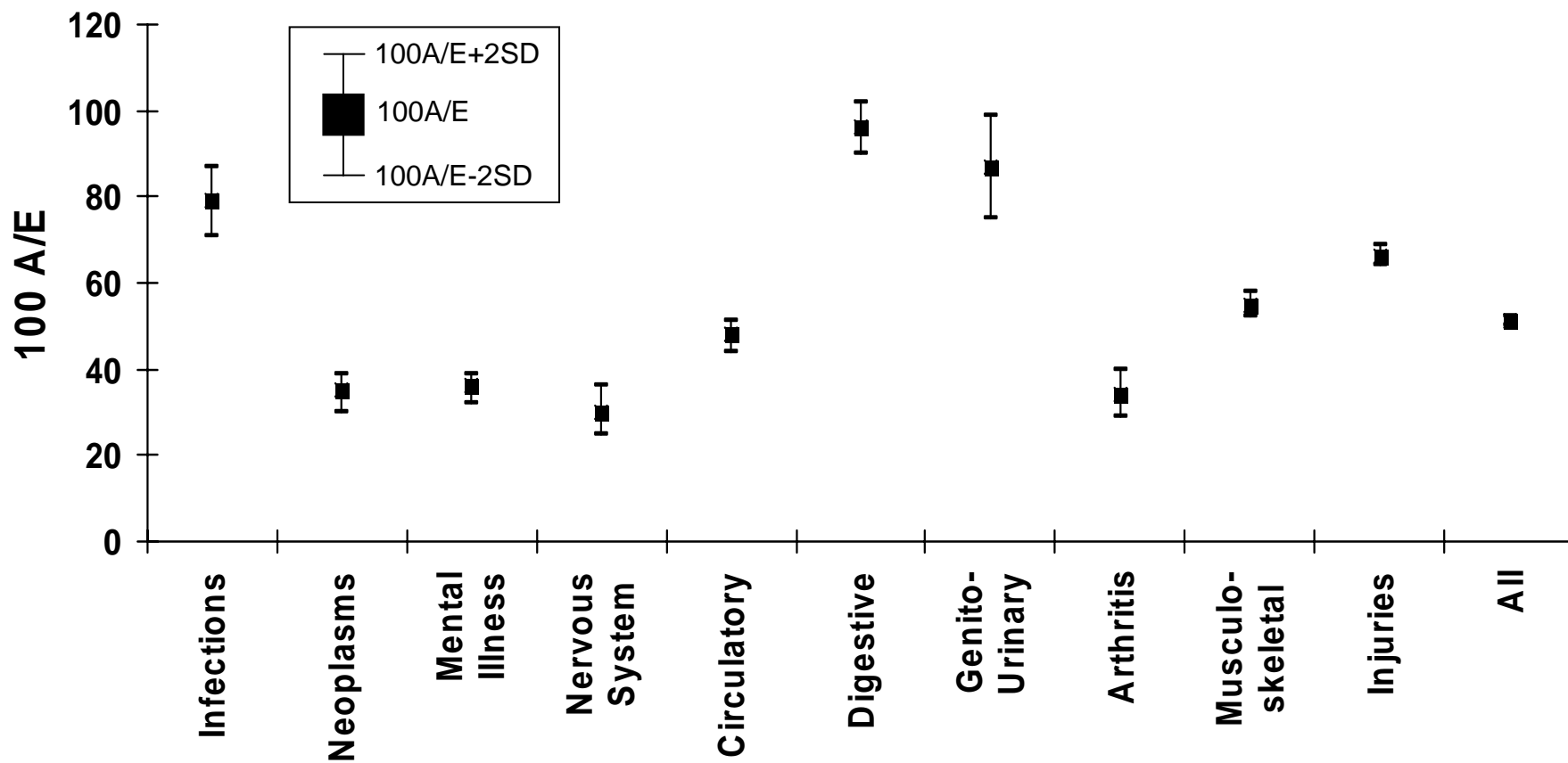
# Results – inceptions (males)



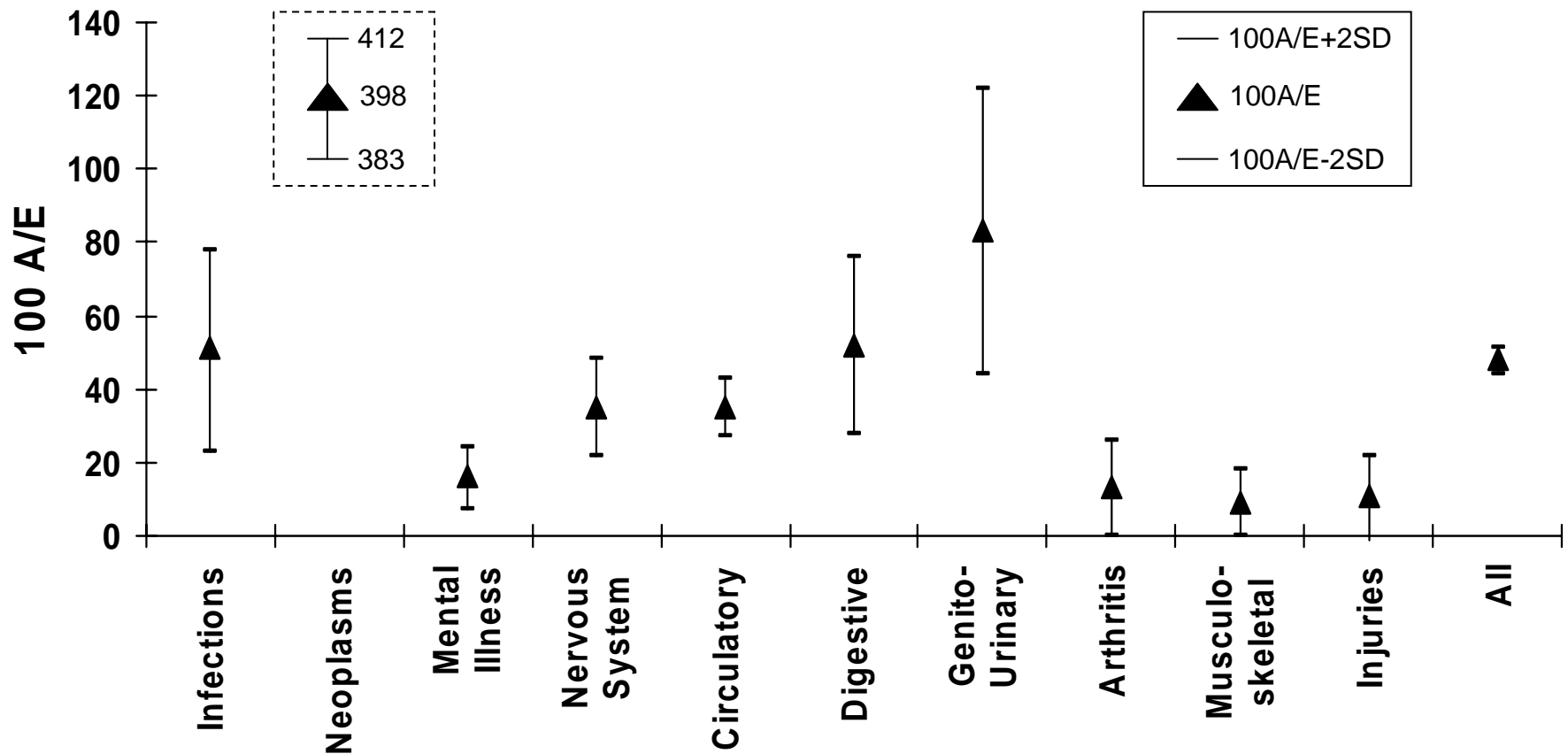
# Results – inceptions (males)



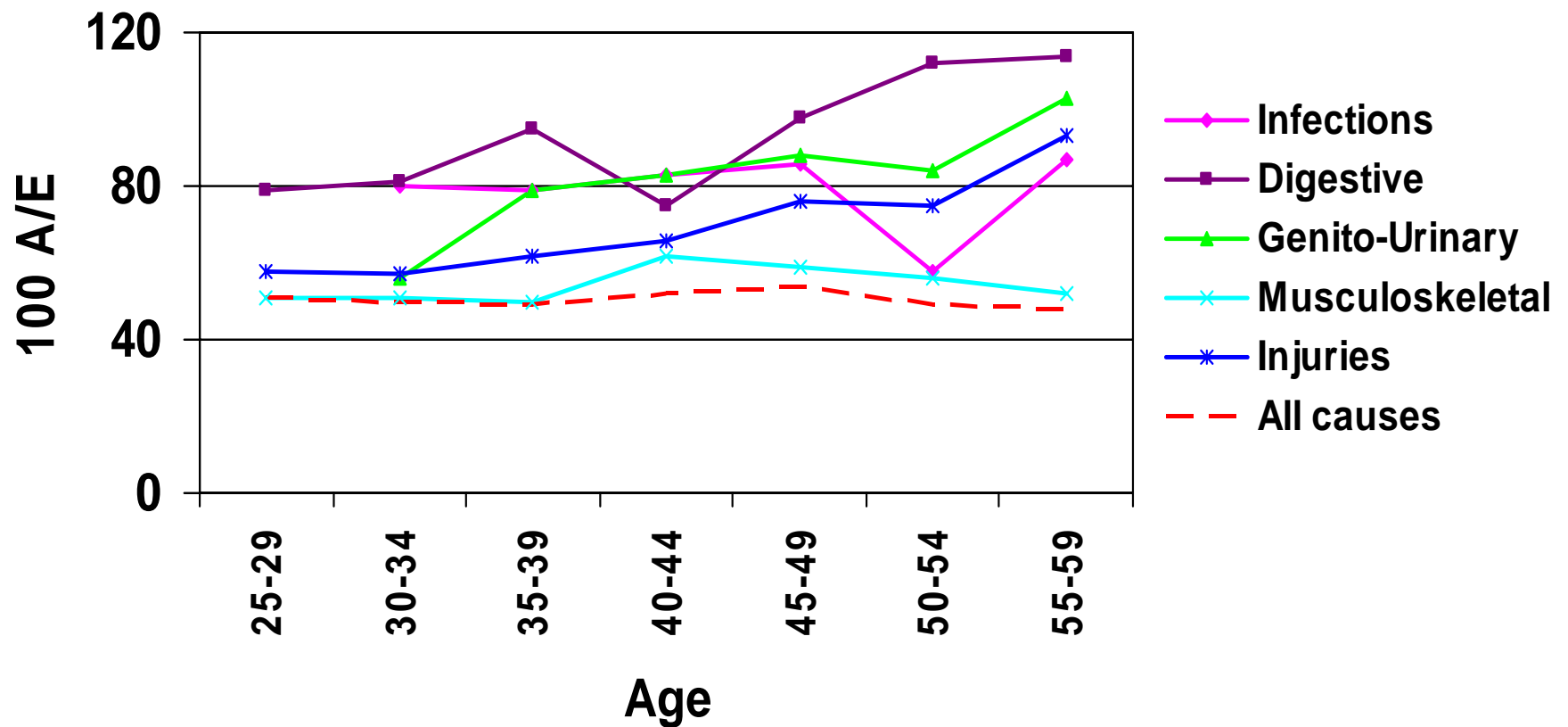
# Results – recoveries (males)



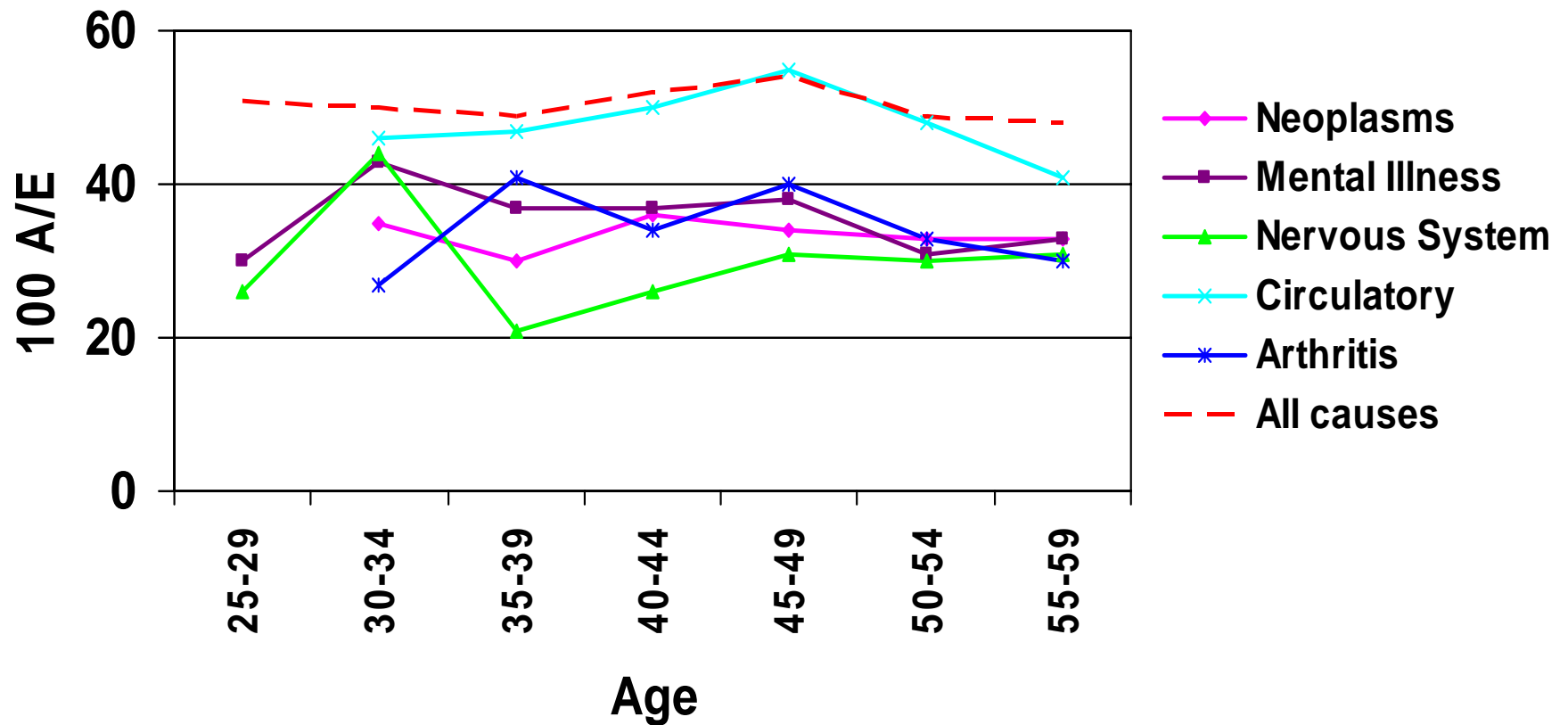
# Results – deaths (males)



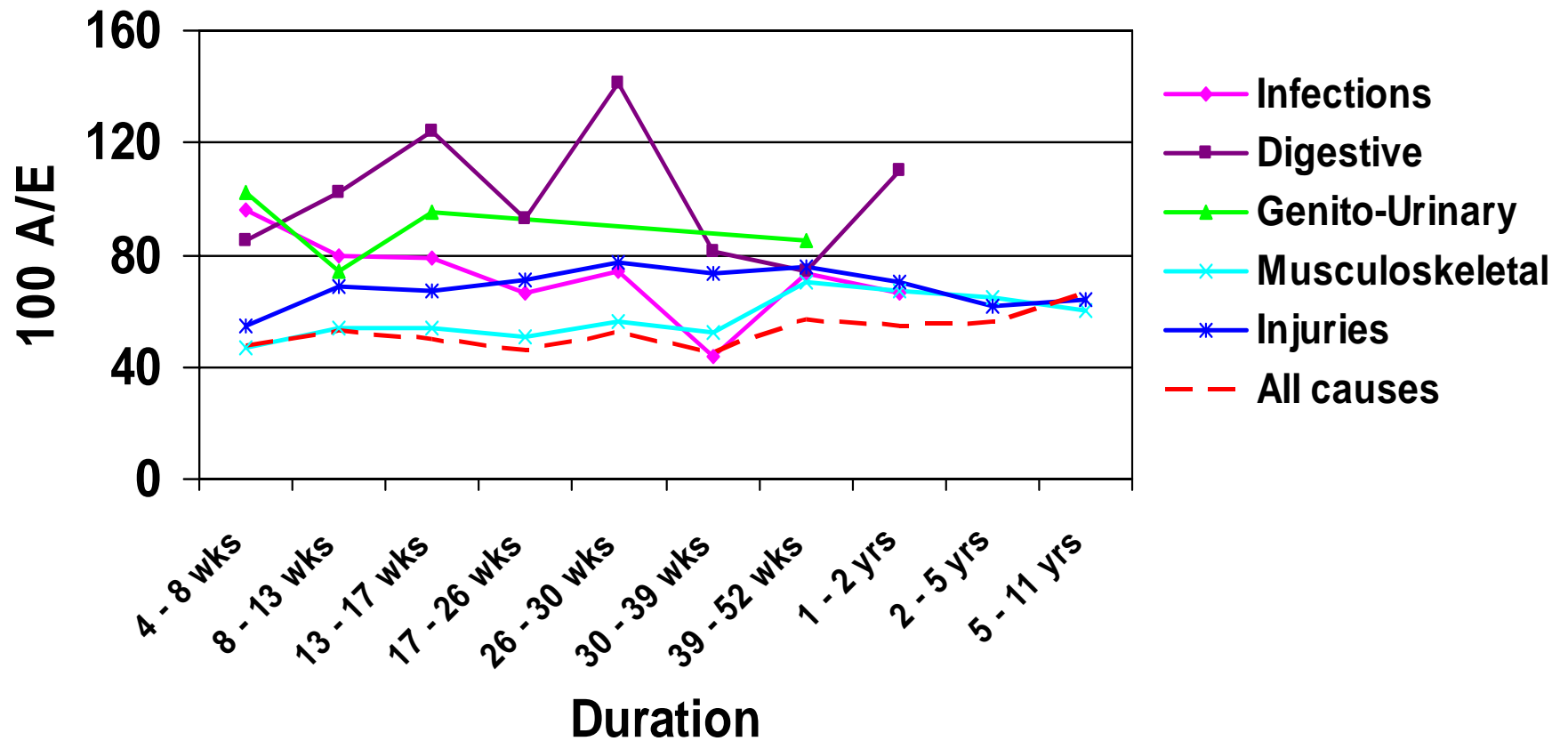
# Results – high recoveries (males)



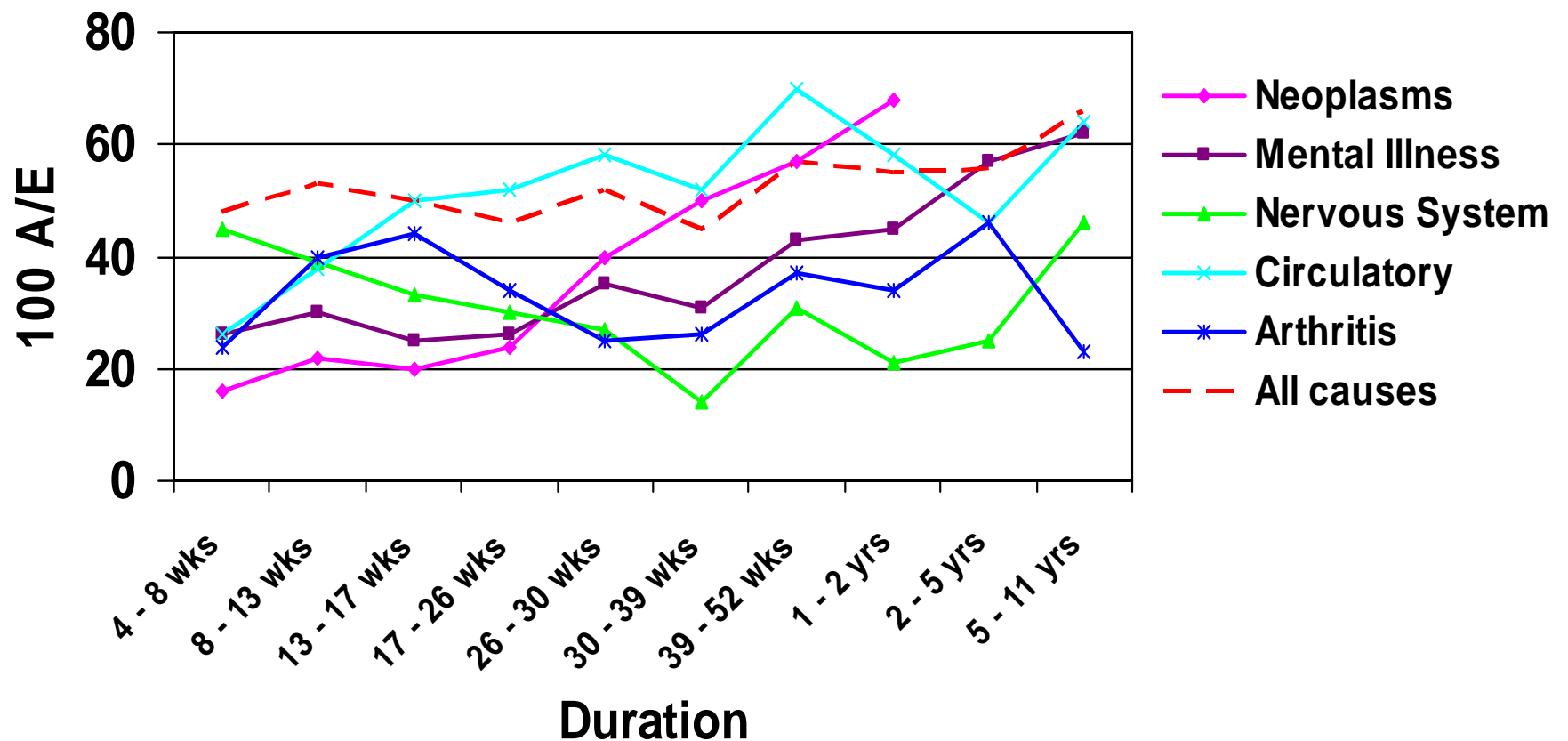
# Results – low recoveries (males)



# Results – high recoveries (males)



# Results – low recoveries (males)



# Questions and feedback

---

- Is the grouping of causes appropriate?
- Would alternative grouping be preferred?
- Would further analysis of terminations experience be useful?
  - Address in some way changes in mix (eg “loyal office”)?
  - Extend to group IP data?
- Would 100 A/E factors to apply to the all causes termination rates be appropriate for reserving?
  - 2 way (proposed): cause / duration and cause / age
  - 3 way (not proposed): cause / duration / age
- Would further analysis of inceptions experience be useful?
- Would other methodologies be preferred eg GLM?
- In what format would practitioners prefer to receive the results?
  - Number of recoveries / deaths along with 100 A/E in Excel?